



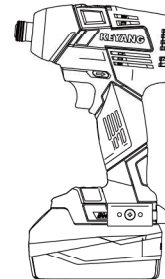
www.keyang.com

**CORDLESS IMPACT DRIVER
CORDLESS IMPACT WRENCH
CORDLESS IMPACT DRIVER/WRENCH
18V (Li-ion Battery)**

ORIGINAL INSTRUCTIONS

EN

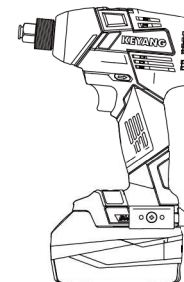
**ID18BL
IW18BL
DW18BL**



ID18BL
CORDLESS IMPACT DRIVER



IW18BL
CORDLESS IMPACT WRENCH



DW18BL
CORDLESS IMPACT DRIVER/WRENCH

Disposal of Old Electrical & Electronic Equipment (Applicable in the European Union and other European countries with separate collection systems)



This symbol on the product or on its packaging indicates that this product shall not be treated as household waste. Instead it shall be handed over to the applicable collection point for the recycling of electrical and electronic equipment. By ensuring this product is disposed of correctly, you will help prevent potential negative consequences for the environment and human health, which could otherwise be caused by inappropriate waste handling of this product. The recycling of materials will help to conserve natural resources. For more detailed information about recycling of this product, please contact your local city office, your household waste disposal service or the shop where you purchased the product.



KEYANG

KEYANG ELECTRIC MACHINERY CO., LTD.

9, Sandan-ro, Danwon-gu, Ansan-si, Gyeonggi-do, Korea

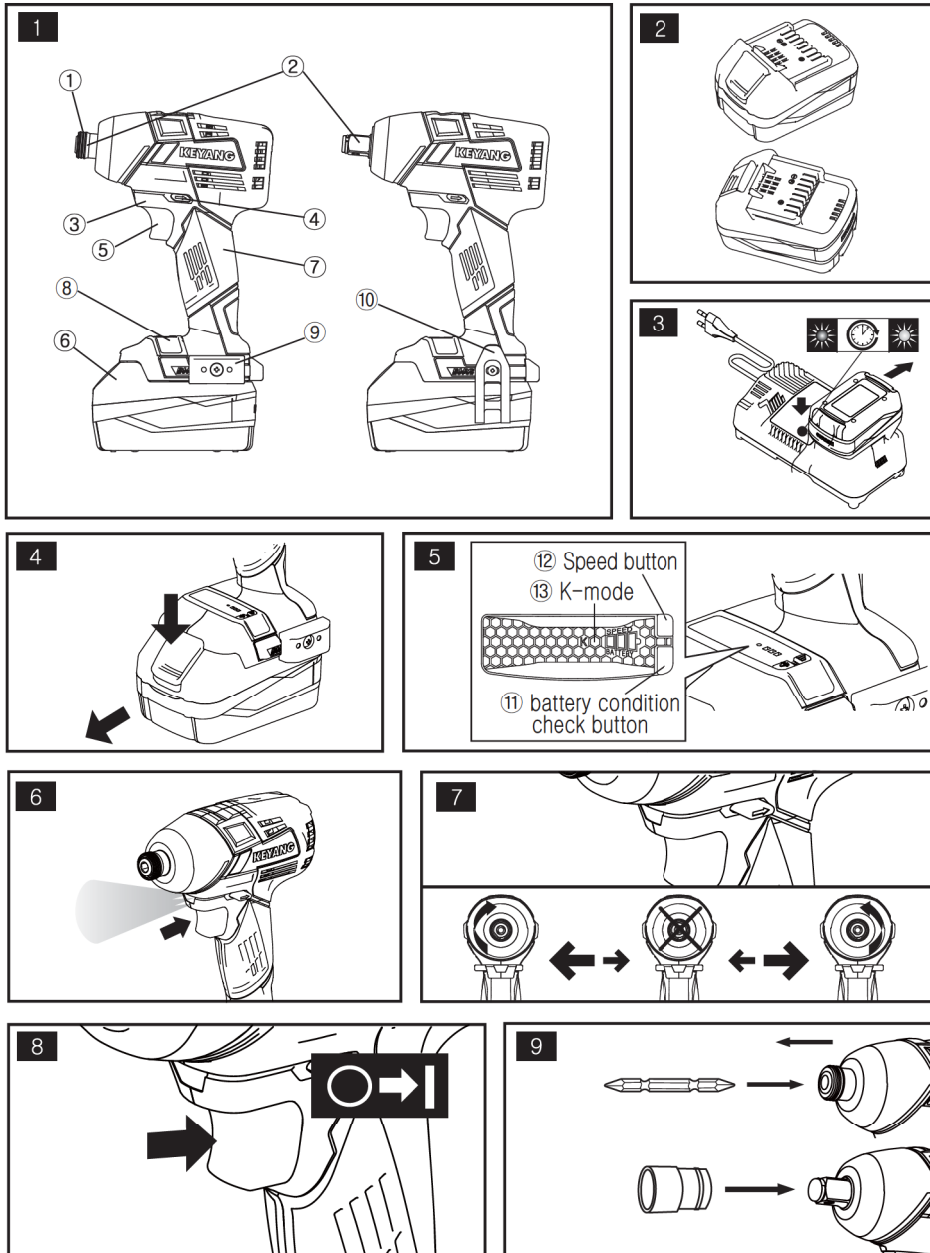
Tel : Int+82-31-490-3000

2015.08

KEYANG ELECTRIC MACHINERY CO., LTD.

7740536

EN



**CORDLESS IMPACT DRIVER
 (Li-ion Battery)**

It is essential that instruction manual is read before the power tool is operated for the first time. Always keeps this instruction manual together with the power tool. Ensure that the instruction manual is with the power tool when it is given to other persons.

Table of Contents

1. General Power Tool Safety Warnings.....3
 2. Impact Wrench Safety Warnings.....4
 3. Battery Charger Safety Warnings.....5
 4. Check before Use.....5
 5. Noise and Vibration Emissions.....6
 6. Specifications and List of Contents.....7
 7. Description of Functions and Applications.....7
 8. Operating Instructions.....7
 9. Maintenance.....9
 10. Examples of Application.....9

Note

As our engineers are striving for the constant research and development to develop the quality of products, shape or structure of our model can be changed without previous notice.

1. General Power Tool Safety Warnings



WARNING! Read all safety warning and all instructions. Failure to follow the warning Instructions may result in electric shock, fire and/or serious injury. Save all warnings and instructions for future reference.

The term "power tool" in the warnings refers to your mains -operated (corded) power tool or Battery-operated (cordless) power tool.

1) Work area safety

- a) **Keep work area clean and well lit.**
Cluttered and dark areas invite accidents.
- b) **Do not operate power tools in explosive atmospheres, such as in the presence of flammable liquids, gases or dust.**
Power tools create sparks which may ignite the dust or fumes.
- c) **Keep children and bystanders away while operating a power tool.** Distractions can cause you to lose control.

2) Electrical safety

- a) **Power tool plugs must match the outlet. Never modify the plug in any way. Do not use any adapter plugs with earthed (grounded) power tools.** Unmodified plugs and matching outlets will reduce risk of

electric shock.

b) Avoid body contact with earthed or grounded surfaces such as pipes, radiators, ranges and refrigerators. There is an increased risk of electric shock if your body is earthed or grounded.



c) Do not expose power tools to rain or wet conditions. Water entering a power tool will increase the risk of electric shock.

d) Do not abuse the cord. Never use the cord carrying, pulling or unplugging the power tool. Keep cord away from heat, oil, sharp edges or moving parts. Damaged or entangled cords increase the risk of electric shock.

e) When operating a power tool outdoors, use an extension cord suitable for outdoor use. Use of a cord suitable for outdoor use reduces the risk of electric shock.

f) If operating a power tool in a damp location is unavoidable, use residual current device (RCD) protected supply. Use of an RCD reduces the risk of electric shock.

3) Personal safety

a) Stay alert, watch what you are doing and use common sense when operating a power tool. Do not use a power tool while you are tired or under the influence of drugs, alcohol or medication. A moment of inattention while operating power tools may result in serious personal injury.



b) Use Safety equipment. Always wear eye protection. Safety equipment such as dust mask, non-skid safety shoes, hard hat, or hearing protection used for appropriate conditions will reduce personal injuries.

c) Prevent unintentional starting. Ensure the switch is in the off position before connecting to power source and/or battery pack, picking up or carrying the tool. Carrying power tools with your finger on the switch or energising power tools that have the switch on invites accidents.

d) Remove any adjusting key or wrench before turning the power tool on. A wrench or key left attached to a rotating part of the power tool may result in personal injury.

EN

e) Do not overreach. Keep proper footing and balance at all times.

This enables better control of the power tool in unexpected situations.

f) Dress properly. Do not wear loose clothing or jewellery. Keep your hair, clothing and gloves away from moving parts.

Loose clothes, jewellery or long hair can be caught in moving parts.

g) If devices are provided for the connection of dust extraction and collection facilities, ensure these are connected and properly used.

Use of dust collection can reduce dust-related hazards.

4) Power tool use and care

a) Do not force the power tool. Use the correct power tool for your application.

The correct power tool will do the job better and safer at the rate for which it was designed.

b) Do not use the power tool if the switch does not turn it on and off.

Any power tool that cannot be controlled with the switch is dangerous and must be repaired.

c) Disconnect the plug from the power source and/or the battery pack from the power tool before making any adjustments, changing accessories, or storing power tools.

Such preventive safety measures reduce the risk of starting the power tool accidentally.

d) Store idle power tools out the reach of children and do not allow persons unfamiliar with the power tool or these instructions to operate the power tool. Power tools are dangerous in the hands of untrained users.

e) Maintain power tools. Check for misalignment or binding of moving parts, breakage of parts and any other condition that may affect the power tools operation. If damaged, have the power tool repaired before use.

Many accidents are caused by poorly maintained power tools.

f) Keep cutting tools sharp and clean.

Properly maintained cutting tools with sharp cutting edges are less likely to bind and are easier to control.

g) Use the power tool, accessories and tool bits etc. in accordance with these instructions, taking into account the working conditions and the work to be performed.

Use of the power tool for operations different from those intended could result in a hazardous situation.

5) Battery tool use and care

a) Recharge only with the charger specified by the manufacturer.

A charger that is suitable for one type of battery pack may create a risk of fire when used with another battery pack.

b) Use power tools only with specifically designated battery pack.

Use of any other battery packs may create a risk of injury and fire.

c) When battery pack is not in use, keep it away from other metal objects, like paper clips, coins, keys, nails, screws, or other small metal objects that can make a connection from one terminal to another.

Shortening the battery terminals together may cause burns or a fire.

d) Under abusive conditions, liquid may be ejected from the battery; avoid contact. If contact accidentally occurs, flush with water. If liquid contacts eyes, additionally seek medical help.

Liquid ejected from the battery may cause irritation or burns.

6) Service

a) Have your power tool serviced by a qualified repair person using only identical replacement parts.

This will ensure that the safety of the power tool is maintained.

2. Impact Wrench Safety Warnings

• Hold power tool by insulated gripping surfaces, when performing an operation where the fastener may contact hidden wiring.

Fasteners contacting a "live" wire may make exposed metal parts of the power tool "live" and could give the operator an electric shock.

• Do not use the charger under the rain or when it is wet.

Failure to observe this can cause serious injury or death due to electric shock.

• Do not insert metal wire or any conductive object through the ventilating opening of the charger.

Failure to observe this can cause serious injury or death due to electric shock.

• Do not attempt to disassemble the charger and keep the charger out of the reach of children.

• If the cord of the charger has been damaged, replace or repair it immediately.

Using the charger with damaged cord may cause electric shock. Electric shock may cause injury.

• Do not throw the battery into the live fire.

In the fire, the battery may explode due to high temperature and cause serious injury.

• Do not short the terminals of the battery

If the terminals of the battery is short circuited, excessive current will flow and fire or explosion may occur causing serious injury.

• Avoid strong impact on the battery and do not pierce the battery case with a sharp object.

Fire or explosion may occur causing serious injury.

• Store the battery indoors at 0~40°C and avoid direct light and closed hot and humid places.

Fire or explosion may occur causing serious injury.

• Do not make your fingers and hands touch with the drill bit during operation.

When your fingers and hands are touched with the drill bit or caught in it, you may be injured seriously.

• Do not leave the running tool.

Other operators stayed close to you may be injured.

• Set the forward/reverse lever in the neutral position while you are changing or operating the tool.

Careless operating of the switch may cause a serious injury by the rotating part of the tool.

• Make sure the battery is attached in the body of the tool tightly before you start operation.

When the battery is not attached tightly, it may be fallen during the operation and cause an injury in the top of your foot.

• Charge only Keyang approved rechargeable batteries. Other types of batteries may burst causing personal injury and damage.

• Do not disassemble battery.

Incorrect re assembly may result in a risk of electric shock, electrocution or fire.

• Accessories may be hot after prolonged use.

When removing the bit from the tool avoid contact with skin and use proper protective gloves when grasping the bit or accessory.

• Keep the battery from being overheated.

If overheated battery is inserted, high temperature stand by is indicated and charging can only start after the battery has been cooled down. When the battery is overheating due to continuous operation, in order to protect the battery performance will automatically shut off the power.

• Leaving the battery for a prolonged time without using it will shorten the life of the battery.

If the battery is to be stored for a prolonged time, charge it completely before storing it. To use the battery for a long period of time, charge it completely every 3 months.

3. Battery charger Safety Warnings

• This appliance is not intended for use by persons (including children) with reduced physical, sensory or mental capabilities, or lack of experience and knowledge, unless they have been given supervision or instruction concerning use of the appliance by a person responsible for their safety.

• Children should be supervised to ensure that they do not play with the appliance.

• Children shall not play with the appliance. Cleaning and user maintenance shall not be made by children without supervision.

• Do not use non-rechargeable batteries with KEYANG battery charger.

4. Check before Use

1) The power source

- Observe correct main voltage. The voltage



of power source must agree with the voltage specified in the name plate.

- Please check if the rated voltage of the product is same as the rated voltage of the battery.

Using the battery with higher rated voltage than the rated voltage of the drill can result in burning and damaging of the motor.

2) Attachment of the battery

Make sure the battery is attached correctly before you use the tool.

Make sure the battery is attached in the body of the tool tightly before you start operation. When the battery is not attached tightly, it may be fallen during the operation and cause an injury in the top of your foot.

3) Polarity of the battery

When the polarity of the battery is not correct, it may cause the trouble of the switch. Also, the reversal of the rotating direction can bring a dangerous situation.

4) Trial run

Before starting the work, wear protection (goggles, safety helmet, ear plugs, protective gloves) and run the tool in the direction avoiding other persons to see if the tool is operated normally.



5) An explanation of any symbols or pictogram on the tool relevant to safe use.

Wear goggles	Wear safety helmet
Wear ear plugs	Wear protective gloves

Return waste material	The battery temperatures over 50°C cause damage

Do not incinerate the battery pack	Do not dispose of batteries with general refuse.

V	Volts
≡	Direct Current
∅	No load speed
/min	Revolutions or reciprocations per minute



EC Declaration of conformity

We declares that these products meet the standards EN 60745-1, EN 60745-2-2, EN 60335-1, EN 60335-2-29, EN 55014-1, EN 55014-2, EN 61000-3-2 and EN 61000-3-3, EN 50581 in compliance with directives 2006/42/EC, 2014/30/EU, 2006/95/EC, 2011/65/EU

Seung yeol, Lee
 Plant Manager

5. Noise and Vibration Emissions

1) Noise and vibration

Noise emission values determined according to EN 60745

Power Tool	ID18BL	DW18BL	IW18BL
A weighted emission sound power level [L _{WA}] [dB(A)]	109	109	107
A weighted emission sound pressure level [L _{pA}] [dB(A)]	98	98	96
Uncertainty [K] [dB(A)]	3	3	3

2) The operator to wear hearing protection

3) Vibration emission

Vibration total values(triaxial vector sum) determined according to EN 60745

Power Tool	ID18BL	DW18BL	IW18BL
Vibration emission value(a _w) [m/s ²]	23	23	22
Uncertainty (K) [m/s ²]	3.2	3.2	3.2

4) The following information

- The declared vibration total value has been measured in accordance with a standard test method given in EN60745 and may be used for comparing one tool with another.
- The declared vibration total value may also be used in a preliminary assessment of exposure.

5) A warning

- The vibration emission during actual use of the power tool can differ from the declared total value depending on the ways in which the tool is used.

- Identify additional safety measures to protect the operator that are based on an estimation of exposure in the actual conditions of use (taking account of all parts of the operating cycle such as the times when the tool is switched off and when it is running idle in addition to the trigger time).

6. Specifications and List of Contents

1) Specifications

Items	Model	ID18BL	DW18BL	IW18BL
Rated voltage [V DC]		18		
No load Speed[/min]		0-3000	0-2400	
Impact rate[/min]		0-3200	0-2600	
Max. Torque[N.m]		180	270	
Weight(without battery)[kg]		0.95	1.0	
Tool holder		1/4"(6.35mm) ○	1/4"(6.35mm) □	1/2"(12.7mm) □

Model	BL18011	BL18014 BL18003	BL18015 BL18004	BL18012	BL18018	BL18023
Battery	Voltage [V DC] 18					
	2000	2600	3000	4000	5000	6000
	Capacity [mAh]					
	Weight [kg] 0.6					

Charger	Model	C18067	C18046 / C18037	C14435/C14439
	Input voltage[V AC]	220-240		
	Output voltage[V DC]	14.4-18.0	10.8-18.0	14.4-18.0
	Weight[kg]	0.6		
	Operating ambient Temp(°C)	0-40		
	Safety class	□		
Charging current[A]	6.5	3.0		

Approx. Charging time [min]					
Model	BL18011	BL18003 / BL18014 BL18004 / BL18015	BL18012	BL18018	BL18023
C18067	25	30	40	50	65
C18046					
C18037					
C14435 C14439	45	55	90	110	130

7. Description of Functions and Applications

1) Description of Function

- ID18BL / DW18BL / IW18BL •

(See figure 1)

- ① Lock sleeve
- ② Tool holder
- ③ Work light
- ④ Rotation direction switch
- ⑤ On/Off switch
- ⑥ Battery
- ⑦ Housing
- ⑧ State of Battery/Speed/K – mode indicator
- ⑨ Bit holder
- ⑩ Hook

- Battery •

(See figure 2)

- Charger •

(See figure 3)

2) Applications

Impact Driver & Wrench: for tightening and loosening screws

8. Operating Instructions

1) How to charge the battery

- ① Insert the plug of the charger in the socket, and the charging indicating lamp will be flickered as follows: green→red→yellow in turn within one second. And then, the battery charger will be in the stand by position charger will be in the stand by position.
- ② Insert the battery in the battery charger considering the polarity, and the charging will be started immediately.

- ③ When the battery working time is remarkably short despite full charging, the life of the battery may be over. Replace the battery immediately.



Read all instructions for safety.
Do not use charger to rain or wet condition.
Use certified KEYANG battery.



Take care not to short-circuit the terminal of the battery. The short-circuit of the terminal may cause a fire or explosion doing a serious personal injury.

2) Charging process



Use only the specified battery and battery charger. Otherwise battery and charger can be damaged by fire, explosion, charging error or overheat.

(See figure 3)

① Charging indication

- Green Blinks : Before charging
- Red Lights : While charging
- Green Lights : Charging completed
- Red Blink : Overheat stand by
(Battery overheated)
- Yellow Blinks : Charging impossible



Be sure to unplug the charger after finishing the charging.

- ② If charging of the heated battery is attempted immediately after it has been used or charged, indicator blinks in red (overheat stand by). After the cooling, indication changes to red glowing and charging begins.
- ③ This charger detects charging status of the battery and always keeps the battery in full charge state.

3) Installing and removing battery

(See figure 4)

- ① Installing.
- Set the rotational direction switch at centre position (locked state).
 - Insert the charged battery into the slot below the handle until the battery securely latched with a click.
- ② Removing.
- Push the battery button once and take it out to remove it.

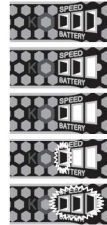


Always set the rotational direction switch at centre position when inserting the battery or changing, carrying or storing the tool.

4) Battery condition

(See figure 5)

Press the battery condition check button(①) over a second and then you can see state of the battery condition from the indicator(③)



1=Battery 100-70% charged

2=Battery 70-45% charged

3=Battery 45-25% charged

4=Battery 25-10% charged(Blinking)

5=Battery less than 10%(Blinking)

5) Work light

(See figure 6)

Pulling the switch trigger will turn on the LED light

6) Reversing the Rotation Direction

Reversing the rotation direction must be done only when the tool is switched off. Reversing the direction during operation may damage the tool

(See figure 7)

- L (Left rotation) : Counterclockwise direction (for loosening of bolt, nut, screw)
- R (right rotation) : Clockwise direction (for fastening of bolt, nut, screw)
- Neutral : Rotation lock (for changing the bit)

7) Adjusting the Speed

(See figure 8)

- ① RPM control with change of switch
The switch has speed control function. Pull the switch lightly for low speed work and pull more for high speed work. By pulling the switch, RPM can be adjusted from zero to maximum rotation
- ② RPM control with Speed button(⑫)
The button has speed control function. Press the button on indicator which is the bottom of product. RPM can be adjusted as follows:
→ Third → Second → First → K-mode →

8) K-mode(One Shot) function

(See figure 5)

- ① One shot(K-mode) make impacting for a second in load condition[over the load current: 10A, minimum thickness of iron: 1.5mm].
But it is not worked in no load condition.



- ② To use this function, press speed button(⑫) until the lamp next to word 'K'(⑬) is been lighting. Then turn on the tool.

9) Working Instructions

- ① Impact operation automatically starts when the load is higher than certain level.
Under no load condition, pushing the switch will only cause adjustment of RPM.
- ② Fastening torque depends on the duration of impact operation. Generally, maximum torque is achieved after 3 to 10 seconds of impact operation. Operating longer will result in only a limited amount of torque increase. Operating the impact for an unnecessarily long time can cause the motor to burn and damaged.
- ③ Fastening torque may depend on the length, grade, and diameter of the bolt.
Fastening torque may also depend on the strength on the material (wood, metal, etc) to fasten and the type of the washer used. Use the tool after calculating the appropriate impact operation time by performing a trial fastening operation and measuring the torque value from the bolt using a torque wrench.



The power tool that has malfunctioning power failure switch is dangerous and must be repaired before use.

10) Residual current device

Recommendation that the tool always be supplied via residual current device with a ratde residual current of 30 mA or less.

9. Maintenance

Always keep tool and air vent clean for safe work.

1) Changing Tool



Before you change the tool, you must remove the battery from the body of the electric drill or set the rotational direction switch in lock position (neutral position).

(See figure 9)

① Mounting the Bit

- Pull the lock sleeve forward.
- Insert a screw driver bit into the tool holder to the end and release the lock sleeve.

② Removing the Bit

- Keep the lock sleeve pressed forward while taking out the bit.

2) Environmental Protection

The tool and its accessories contain much raw materials and plastics that can be recycled after their life. Therefore, plastic parts are indicated with their material types so that they can be classified and recycled for each material type.



Do not dispose of the battery with home garbage or into the fire or river.

3) What to do when the tool does not work normally

It is very dangerous for customers to troubleshoot or repair the tool for themselves. Contact the nearest A/S center (sales agency) and request for a service.

The repair shall be requested to the qualified electric specialist.

4) Y attachment cord

If the replacement of the supply cord is necessary. This has to be done by the manufacturer or his agent in order to avoid a safety hazard.

5) After-sales Service and Customer Assistance

Our after-sales service responds to your questions concerning maintenance and repair of your product as well as spare parts. Exploded views and information on www.keyang.com

Our customer service representatives can answer your questions concerning possible applications and adjustment of products and accessories.

Korea

9, Sandan-ro, Danwon-gu, Ansan-si, Gyeonggi-do, Republic of Korea
Tel : +82-31-490-3000

China

E-66 Dong Wu Nan RD. Economic Development Wuzhong, Suzhou City, China
Tel:+86-512-6561-8055 Fax:+86-512-6561-0862